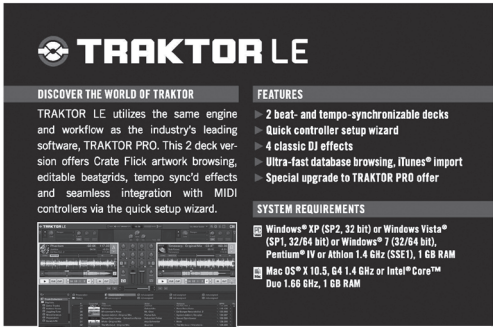
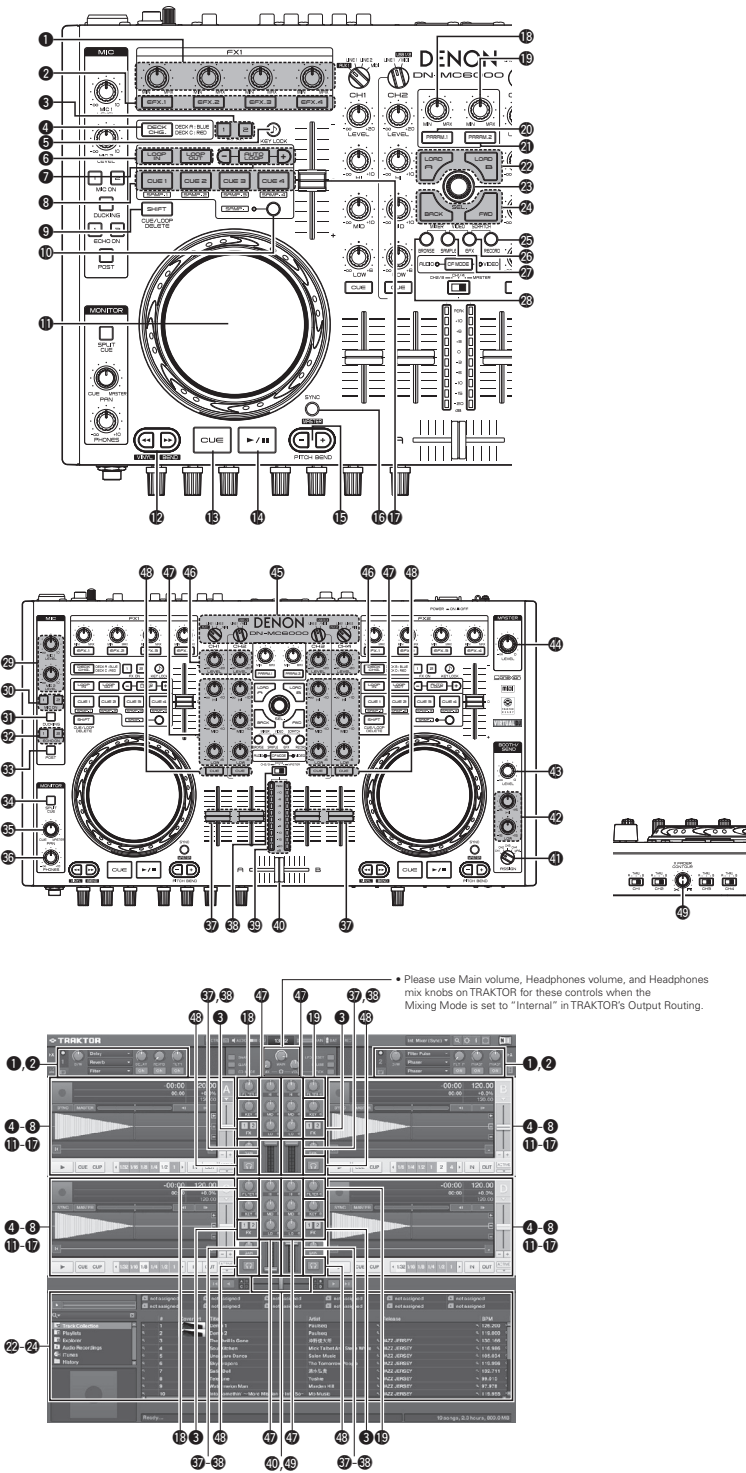


DENON
DN-MC6000 Quick Guide for TRAKTOR



Mac OS and iTunes are registered trademarks of Apple Inc., registered in the U.S. and other countries. Windows and Windows Vista are registered trademarks of Microsoft Corporation in the United States and/or other countries. Intel Core and Pentium are registered trademarks of Intel Corporation in the United States and other countries. All trademarks are the property of their respective holders. All specifications subject to change without notice. ©2010, NATIVE INSTRUMENTS GmbH. All rights reserved. Made in Germany.

Function table
Available for TRAKTOR control with DN-MC6000

DN-MC6000 Button/Knob No.	DN-MC6000 CONTROLS	FUNCTIONALITY	
		Push / Rotate	SHIFT +
1	EFX.1 knob	Controls the relative mix of the direct-to-processed signal.	ADVANCED EFX MODE: Selects effect type. CHAINED EFX MODE: -
2	EFX.2 knob	ADVANCED EFX MODE: Controls the effect parameter. CHAINED EFX MODE: Controls the amount of the selected effect.	ADVANCED EFX MODE: - CHAINED EFX MODE: Selects effect type.
3	EFX.3 knob		
4	EFX.4 knob		
5	EFX.1	ADVANCED EFX MODE: Switches the effect parameter. CHAINED EFX MODE: -	-
6	EFX.2	ADVANCED EFX MODE: Switches the effect parameter on and off. CHAINED EFX MODE: Switches the selected effect on and off.	-
7	EFX.3		
8	EFX.4		
9	FX 1/2	Switches the FX1/2 on and off.	-
10	DECK CHG.	Choose a focus of DECK A-C/B-D.	-
11	KEYLOCK	Switches key lock feature on and off.	TAP feature.
12	LOOP IN	Sets Loop In point.	Clear the LOOP.
13	LOOP OUT	Sets Loop Out point.	
14	+/-	Edits the Loop Size / In BeatJump mode, edit the jump size.	In BeatJump mode, Moves by edited jump size.
15	AUTO LOOP	Switches Auto Loop feature on and off.	Opens the advanced panel for BeatJump feature.
16	CUE1-4 (SAMP1-4)	SAMP.mode=OFF : Set Cue 1-4 point and play. * SAMP.mode=ON : Set Cue 5-8 point and play. *	Deletes CUE point. *
17	SHIFT	Deletes CUE or LOOP point / Shift function.	-
18	SAMP	Selects CUE1-4 or CUE5-8.	-
19	JOG WHEEL	Scratch, Search, or Bend feature.	Fast search for files in file list.
20	FAST SEARCH +/-	Fast search feature. + : Forward. - : Reverse.	+ : Bend mode (touch sense of DN-MC6000 off) feature. - : Vinyl mode (touch sense of DN-MC6000 on) feature.
21	CUE	Sets current cue point, or back to current cue point.	-
22	PLAY/PAUSE	Play or Pause.	-
23	PITCH BEND +/-	Controls the pitch bend.	+ : Pitch lock feature of DN-MC6000 on. - : Pitch lock feature of DN-MC6000 off.
24	SYNC	Automatic beat matching.	Sets current Deck to the Master for SYNC feature.
25	PITCH FADER	Adjusts the pitch.	-
26	PARAM.1 knob	Controls the filter cutoff.	-
27	PARAM.2 knob		
28	PARAM.1	Switches Filter feature, on and off.	-
29	PARAM.2		
30	LOAD A	Loads the selected song on the deck A.	Loads the selected song on the deck C. * Duplicate function in TRAKTOR LE.
31	LOAD B	Loads the selected song on the deck B.	Loads the selected song on the deck D. * Duplicate function in TRAKTOR LE.
32	Track select knob (with SW)	ROTATE: Scrolls through selected library in browser list. PUSH : -	ROTATE: Scrolls through browser tree. PUSH: Opens and close directory/folder in browser tree.
33	BACK	Jumps cursor to previous favorites slots.	Loads the selected song on the preview player.
34	FWD	Jumps cursor to next favorites slots.	The preview player Play or Pause.
35	RECORD	-	MIDI channel of DN-MC6000 changes. DECK CHG.= BLUE DECK A = MIDI CHANNEL 13, DECK B = MIDI CHANNEL 15 DECK CHG = RED DECK C = MIDI CHANNEL 14, DECK D = MIDI CHANNEL 16
36	EFX.	-	MIDI channel of DN-MC6000 changes. DECK CHG = BLUE DECK A = MIDI CHANNEL 9, DECK B = MIDI CHANNEL 11 DECK CHG = RED DECK C = MIDI CHANNEL 10, DECK D = MIDI CHANNEL 12
37	SAMPLE	-	MIDI channel of DN-MC6000 changes. DECK CHG = BLUE DECK A = MIDI CHANNEL 5, DECK B = MIDI CHANNEL 7 DECK CHG = RED DECK C = MIDI CHANNEL 6, DECK D = MIDI CHANNEL 8
38	BROWSER	Expands or Shrinks the browser window.	MIDI channel of DN-MC6000 changes. DECK CHG = BLUE DECK A = MIDI CHANNEL 1, DECK B = MIDI CHANNEL 3 DECK CHG = RED DECK C = MIDI CHANNEL 2, DECK D = MIDI CHANNEL 4
39	CHANNEL FADER	Controls the level of the selected channel.	-
40	CROSS FADER	Controls the relative output level from the summed A and B Mixes.	-
41	CHANNEL LEVEL	Adjusts the level of the selected channel.	-
42	CHANNEL EQ HI	Adjusts the Hi-frequency response.	-
43	CHANNEL EQ MID	Adjusts the Mid-frequency response.	-
44	CHANNEL EQ LOW	Adjusts the Low-frequency response.	-
45	CUE CH1-4	Routes the respective source to the headphone and metercue sections.	-
46	CF CONTOUR knob	Adjusts the shape of the cross fader curve.	-

- * Function available in TRAKTOR Pro.
- Before following these instructions please perform the "Setup Wizard" found in the TRAKTOR software. (Refer to the "TRAKTOR Getting Started" guide supplied with TRAKTOR.)
- Regarding Audio Setting for Mac, please refer to the "DN-MC6000_mac_configuration_manual.pdf" in DN-MC6000 Resource CD-ROM attached.

Controlling two decks on TRAKTOR

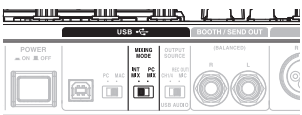
Set the following items of DN-MC6000 and TRAKTOR.

Mixing by using DN-MC6000 CH2/CH3

Setting of DN-MC6000

Channel input source switch knob (Top panel) CH2: "USB1/2 + MIDI" CH3: "USB3/4 + MIDI"

Mixing mode selector switch (Rear panel) "INT MIX"



Setting of TRAKTOR



Audio Setup Audio Device: DN-MC6000

Output Routing Mixing Mode: External Output Channel A : L = 1:Front Left R = 2:Front Right Output Channel B : L = 3:Back Left R = 4:Back Right

Input Routing Input Channel A : L (Mono)= 1:Front Left R = 2:Front Right Input Channel B : L (Mono) = 3:Front Center R = 4:Low Frequency Effects

Using the mixer function of TRAKTOR

Setting of DN-MC6000

Channel input source switch knob (Top panel) CH2: "USB1/2 + MIDI" CH3: "USB3/4 + MIDI"



Setting of TRAKTOR



Audio Setup Audio Device: DN-MC6000

Output Routing Mixing Mode: Internal Output Monitor : L = 3:Back Left R = 4:Back Right Output Master : L = 1:Front Left R = 2:Front Right

Input Routing Input Channel A : L (Mono)= 1:Front Left R = 2:Front Right Input Channel B : L (Mono) = 3:Front Center R = 4:Low Frequency Effects

Controlling four decks on TRAKTOR

Set the following items of DN-MC6000 and TRAKTOR.

Setting of DN-MC6000

Channel input source switch knob (Top panel) CH1: "MIDI" CH2: "USB1/2 + MIDI" CH3: "USB3/4 + MIDI" CH4: "MIDI"



- "Setting of TRAKTOR" is the same in the case of "Using the mixer function of TRAKTOR" - "Setting of TRAKTOR" mentioned above.

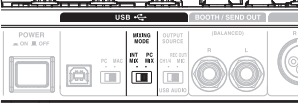


Audio Setup Audio Device: DENON DJ ASIO Driver

Output Routing Mixing Mode: External Output Channel A : L = 1:DN-MC6000 1 R = 2:DN-MC6000 2 Output Channel B : L = 3:DN-MC6000 3 R = 4:DN-MC6000 4

Input Routing Input Channel A : L (Mono)= 1:DN-MC6000 1 R = 2:DN-MC6000 2 Input Channel B : L (Mono) = 3:DN-MC6000 3 R = 4:DN-MC6000 4

Mixing mode selector switch (Rear panel) "PC MIX"

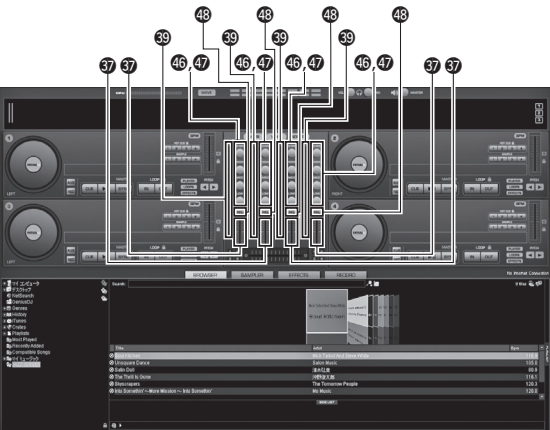
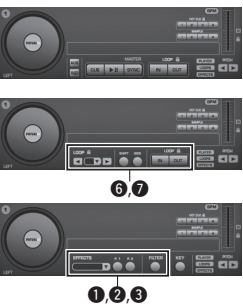
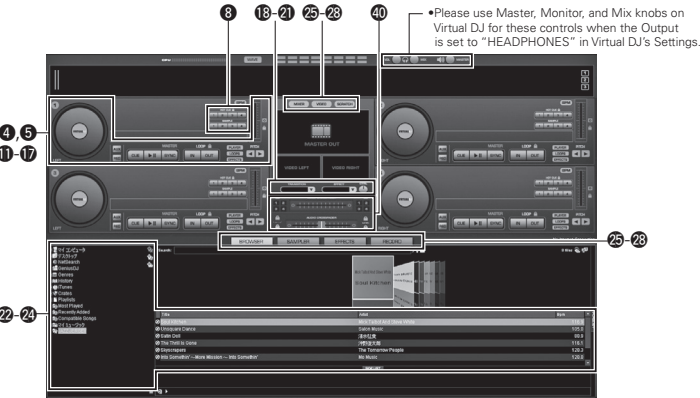
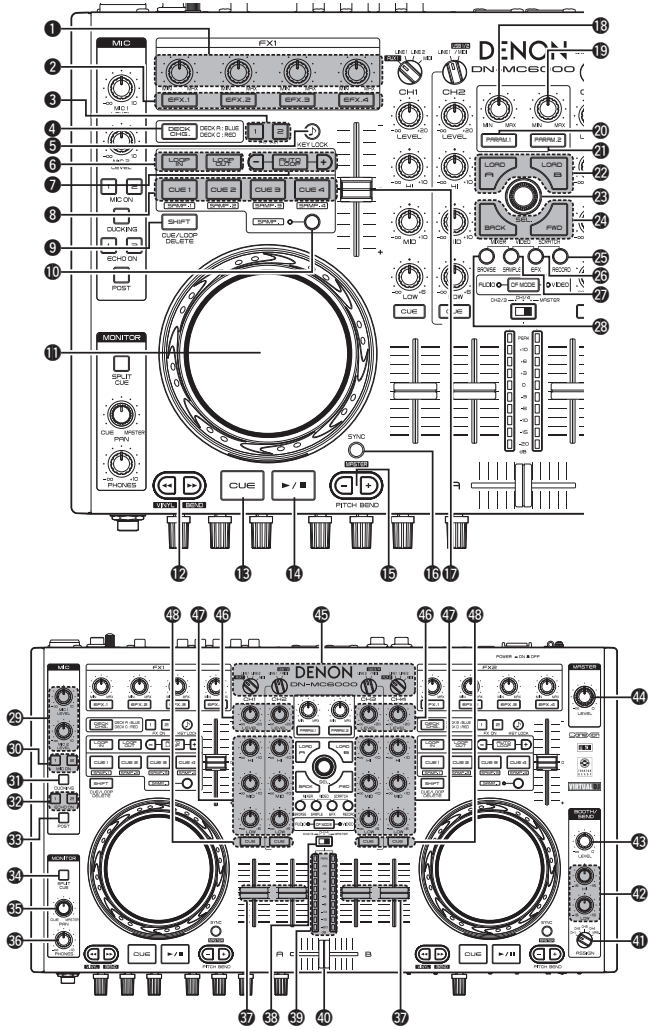


Audio Setup Audio Device: DENON DJ ASIO Driver

Output Routing Mixing Mode: Internal Output Monitor : L = 3:DN-MC6000 3 R = 4:DN-MC6000 4 Output Master : L = 1:DN-MC6000 1 R = 2:DN-MC6000 2

Input Routing Input Channel A : L (Mono)= 1:DN-MC6000 1 R = 2:DN-MC6000 2 Input Channel B : L (Mono) = 3:DN-MC6000 3 R = 4:DN-MC6000 4

DENON
DN-MC6000 Quick Guide for Virtual DJ



Function table

Available for Virtual DJ control with DN-MC6000

DN-MC6000 Button/Knob No.	DN-MC6000 CONTROLS	FUNCTIONALITY	
		Push / Rotate	SHIFT + / (SAMP. +)
1	EFX.1 knob	Selects effect type.	—
	EFX.2 knob	Controls parameter1.	—
	EFX.3 knob	Controls parameter2.	—
	EFX.4 knob	Controls filter cutoff.	~/ (Controls the volume of sample.)
2	EFX.1	Switches the selected effect on and off.	—
	EFX.2	Effect buttons 1 (Only supported in selected effect plugins).	—
	EFX.3	Effect buttons 2 (Only supported in selected effect plugins).	—
	EFX.4	Resets filter (off).	~/ (Plays or stops sample.)
3	FX 1/2	FX1: Flanger on/off. FX2: Beat Grid on/off.	FX1: Brake on/off FX2: Backspin on/off
4	DECK CHG.	Deck changes between A and C, or B and D.	Selects PLAYER/LOOPS/EFFECTS screen on the DECK.
5	KEYLOCK	Switches key lock feature on and off.	TAP feature.
6	LOOP IN	Sets Loop In point.	Clear the LOOP.
6	LOOP OUT	Sets Loop Out point.	Clear the LOOP.
7	+/-	Edits the Loop Size.	Moves the loop left/right by 4 beats. / (Adjusts sample length by halving/doubling it.)
	AUTO LOOP	Switches Auto Loop feature on and off.	Switches smart loop on/off. (Switches sample loop on/off)
8	CUE1-4 (SAMP.1-4)	SAMP.mode=OFF : Sets Cue point and play. SAMP.mode=ON: Sets sample and sample play.	SAMP.mode=OFF : Clears CUE point. SAMP.mode=ON: Stutter.
9	SHIFT	Deletes CUE or LOOP point / Shift function / Select Effect mode.	—
10	SAMP.	Selects CUE1-4 or SAMP.1-4.	—
11	JOG WHEEL	Locate cue points, scratches the song playback or pitch bend operation.	BROWSER: Scrolls file/folder list. SAMPLER: Selects sample. EFFECTS: Selects effect. RECORD: —
12	FAST SEARCH +/-	Fast search feature. + : Forward. - : Reverse.	+ : Bend mode (touch sense of DN-MC6000 off) feature. - : Vinyl mode (touch sense of DN-MC6000 on) feature.
13	CUE	Sets current cue point, or back to current cue point.	—
14	PLAY/PAUSE	Play or Pause.	—
15	PITCH BEND +/-	Applies pitch bend.	+ : Pitch lock feature of DN-MC6000 on. - : Pitch lock feature of DN-MC6000 off.
16	SYNC	Automatic beat matching.	Sets current Deck to the Master for SYNC feature.
17	PITCH FADER	Adjusts the pitch.	—
18	PARAM.1 knob	BROWSER: Selects video transition. SAMPLER: Adjusts the sample volume on the left deck. EFFECTS: Adjusts parameter #1 of the selected effect. RECORD: —	BROWSER: — SAMPLER: — EFFECTS: — RECORD: —
	PARAM.2 knob	BROWSER: Selects video effect. SAMPLER: Adjusts the sample volume on the right deck. EFFECTS: Adjusts parameter #2 of the selected effect. RECORD: —	BROWSER: Adjusts the parameter 2 for the selected effect. SAMPLER: — EFFECTS: — RECORD: —
	PARAM.1	BROWSER: Activates selected video transition. SAMPLER: Plays the sample on the left deck. EFFECTS: Activates the selected effect on the left deck. RECORD: —	BROWSER: — SAMPLER: Stutter. EFFECTS: — RECORD: —
	PARAM.2	BROWSER: Activates selected video effect. SAMPLER: Plays the sample on the right deck. EFFECTS: Activates the selected effect on the right deck. RECORD: —	—
22	LOAD A	BROWSER: Loads the selected song on the deck A. SAMPLER: Selects the sampler deck. EFFECTS: Selects the effect deck. RECORD: —	BROWSER: Loads the selected song on the deck C. SAMPLER: — EFFECTS: — RECORD: —
	LOAD B	BROWSER: Loads the selected song on the deck B. SAMPLER: Selects the sampler deck. EFFECTS: Selects the effect deck. RECORD: —	BROWSER: Loads the selected song on the deck D. SAMPLER: — EFFECTS: — RECORD: —
	Track select knob (with SW)	ROTATE: BROWSER: Scrolls file/folder list. SAMPLER: Selects sample. EFFECTS: Selects effect. RECORD: — PUSH : BROWSER: Songs: Adds song to playlist. * Folders: Enters folder. SAMPLER: Songs: Adds song to playlist. * Folders: Enters folder. SAMPLER: Plays sample. EFFECTS: Turns selected effect on/off. RECORD: —	ROTATE: (Selects samples.) PUSH : BROWSER: Songs: Adds songs to sidelist. * Folders: Expands/collapses folder (If it has subfolders.) SAMPLER: Stutters sample. EFFECTS: — RECORD: Starts recording next track. *
	BACK	BROWSER: Moves between folders, songs, playlist* and sidelist*.	BROWSER: — SAMPLER: — EFFECTS: — RECORD: —
24	FWD	SAMPLER: Selects sample. EFFECTS: Moves between Sound Effects, Video Effects and Video Transitions.	—
	RECORD	RECORD: —	—
25	RECORD	Jumps to RECORD slots.	MIDI channel of DN-MC6000 changes. DECK CHG = BLUE DECK A = MIDI CHANNEL 13, DECK B = MIDI CHANNEL 15 DECK CHG = RED DECK C = MIDI CHANNEL 14, DECK D = MIDI CHANNEL 16
26	EFX.	Jumps to EFX slots.	MIDI channel of DN-MC6000 changes. DECK CHG = BLUE DECK A = MIDI CHANNEL 9, DECK B = MIDI CHANNEL 11 DECK CHG = RED DECK C = MIDI CHANNEL 10, DECK D = MIDI CHANNEL 12
27	SAMPLE	Jumps to SAMPLE slots.	MIDI channel of DN-MC6000 changes. DECK CHG = BLUE DECK A = MIDI CHANNEL 5, DECK B = MIDI CHANNEL 7 DECK CHG = RED DECK C = MIDI CHANNEL 6, DECK D = MIDI CHANNEL 8
28	BROWSER	Jumps to BROWSER slots.	MIDI channel of DN-MC6000 changes. DECK CHG = BLUE DECK A = MIDI CHANNEL 1, DECK B = MIDI CHANNEL 3 DECK CHG = RED DECK C = MIDI CHANNEL 2, DECK D = MIDI CHANNEL 4
37	CHANNEL FADER	Controls the level of the selected channel.	—
40	CROSS FADER	Crossfade the output between the left and light decks.	—
46	CHANNEL LEVEL	Adjusts the level of the selected channel.	—
47	CHANNEL EQ HI	Adjusts the Hi-frequency response.	—
	CHANNEL EQ MID	Adjusts the Mid-frequency response.	—
	CHANNEL EQ LOW	Adjusts the Low-frequency response.	—
48	CUE CH1-4	Controls PFL.	—

* Function available in Virtual DJ Pro (or trial of Virtual DJ Pro, during the trial period).

Regarding Audio Setting for Mac, please refer to the “DN-MC6000_mac_configuration_manual.pdf” in DN-MC6000 Resource CD-ROM attached.

Controlling four decks on Virtual DJ

Set the following items of DN-MC6000 and Virtual DJ.

Setting of DN-MC6000

Channel input source switch knob (Top panel)
CH1: “MIDI” CH2: “USB1/2 + MIDI”
CH3: “USB3/4 + MIDI” CH4: “MIDI”



Setting of Virtual DJ

[Mac]



Inputs: LINE INS *
Outputs: HEADPHONES
(Master: Chan 1&2 / Headphones: Chan 3&4)
Sound card: 4-IN */4-OUT CARD (DN-MC6000)

* Function available in Virtual DJ Pro (or trial of Virtual DJ Pro, during the trial period).

Mixing by using DN-MC6000 CH2/CH3

Set the following items of DN-MC6000 and Virtual DJ.

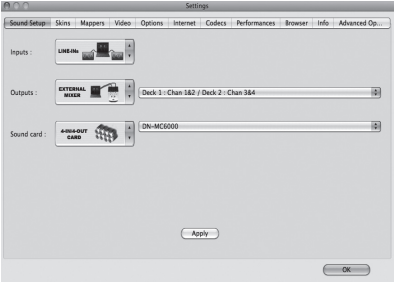
Setting of DN-MC6000

Channel input source switch knob (Top panel)
CH2: “USB1/2 + MIDI” CH3: “USB3/4 + MIDI”



Setting of Virtual DJ

[Mac]



Inputs: LINE INS *
Outputs: EXTERNAL MIXER *
(Deck1: Chan 1&2 / Deck2 : Chan 3&4)
Sound card: 4-IN */4-OUT CARD (DN-MC6000)

* Function available in Virtual DJ Pro (or trial of Virtual DJ Pro, during the trial period).

Virtual DJ is a registered trademark of Atomix Productions.

Minimum system requirements:

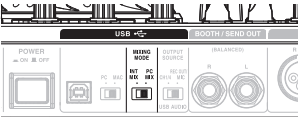
Mac Platform	PC Platform
<ul style="list-style-type: none">Intel® processorMac OS X v10.51024x768 resolutionCoreAudio compatible soundcard1024MB RAM50MB free on the hard drive	<ul style="list-style-type: none">Intel® Pentium® 4 or AMD Athlon™ XP1024x768 resolutionDirectX compatible soundcard512MB RAM50MB free on the hard drive

Features:

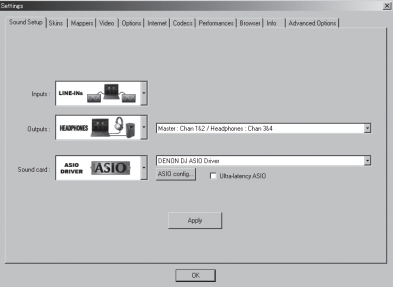
- Multi-deck support up to 99 independent zero-latency players
- One-click beat matching and synchronization (FAME algorithm)
- Time-Stretch and Master Tempo Pitch algorithms
- Automatic seamless and beat-aware LOOP functionality
- Synchronized sampler with 12 instant record and playback slots
- Real scratch simulation
- Automatic first beat and last beat detection
- Automatic BPM and KEY calculation

Mixing mode selector switch (Rear panel)

“PC MIX”



[PC]



Inputs: LINE INS *
Outputs: HEADPHONES
(Master: Chan 1&2 / Headphones: Chan3&4)
Sound card: DENON DJ ASIO Driver