

# DENON DJ Music Manager

---

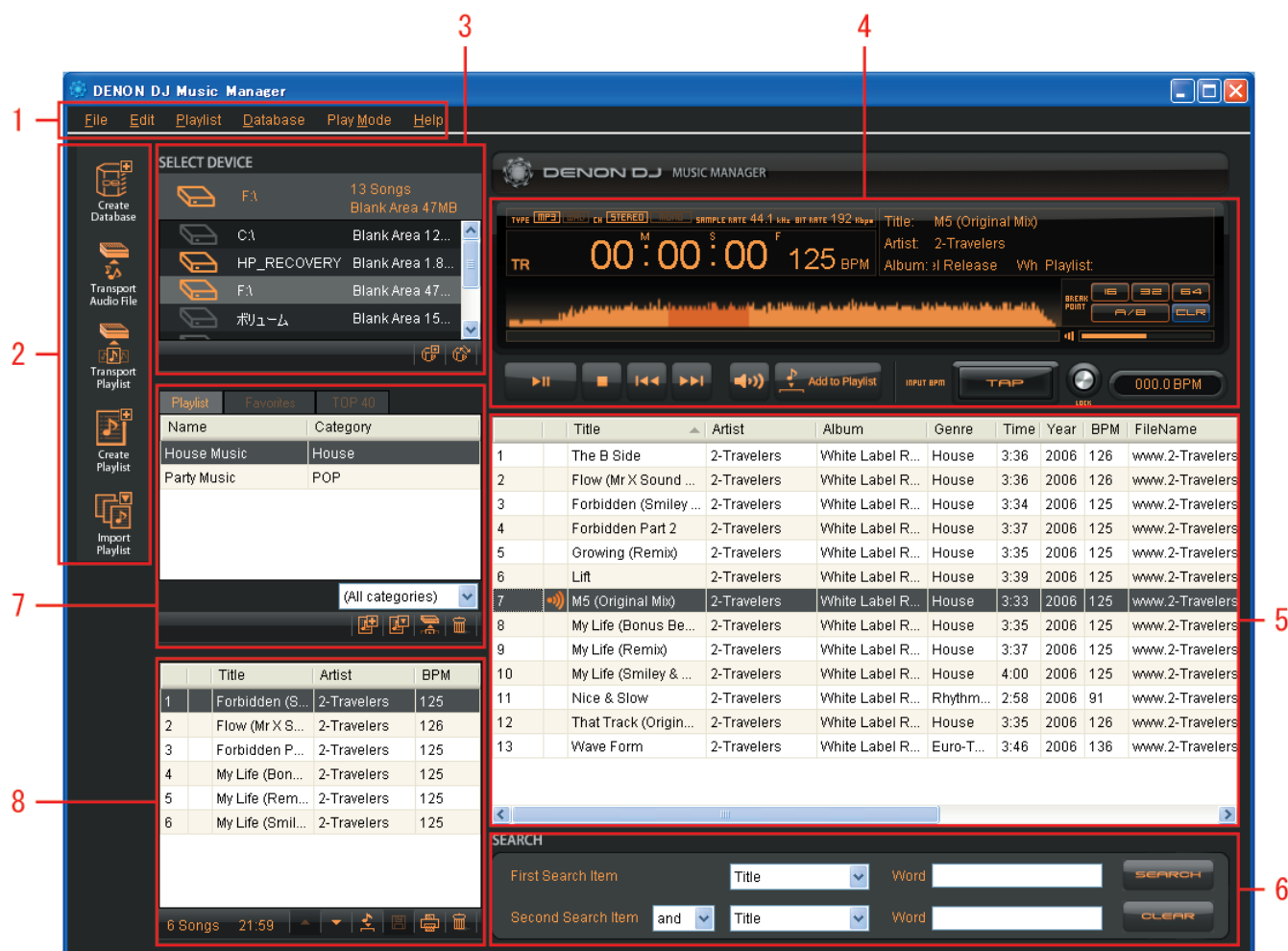


**DENON DJ Music Manager**

**“DENON DJ Music Manager” has the functions described below**

- ☐ **Creation and updating of databases**
- ☐ **Playback function**
- ☐ **Editing of file data**
- ☐ **Searching for files**
- ☐ **Creation and updating of playlists**
- ☐ **Playlist Import**
- ☐ **Backup**
- ☐ **Restore**
- ☐ **Automatic detection of the BPM**
- ☐ **Waveform data generation function**
- ☐ **Break point setting function**

## ■ Description of screen



1	<b>[Menu section]</b> Select and execute the various functions of DENON DJ Music Manager.
2	<b>[Icon section]</b> Includes functions frequently used by users, such as "Create Database", "Transport Audio File", "Transport Playlist", "Create Playlist", "Import Playlist", etc.
3	<b>[Device selection section]</b> Displays accessible devices and shows the remaining capacity of the device, whether or not there is a database, etc. Devices can be selected by clicking. The currently selected device is displayed at the top.
4	<b>[Playback section]</b> Preview MP3/WAV files in player, add files to Playlist, set BPM manually and set file's Break Point.
5	<b>[Audio file list display section]</b> Displays a list of the MP3/WAV files registered in the database of the currently selected device.
6	<b>[File search section]</b> This area is used to find your registered MP3/WAV files quickly by 7 search criteria's; Artist, Album, Title, Genre, Year, BPM and File Name.
7	<b>[Playlist display section]</b> Displays a list of the playlists registered in the database of the currently selected device. (Playlist, Favorites, TOP 40)
8	<b>[Section for the display of a list of files registered in the playlist]</b> Displays a list of the MP3/WAV files registered in the selected playlist.

## Introduction

The DENON DJ Media Players are specifically designed to playback MP3/WAV files stored on external USB devices such as hard drives and thumb Drives in addition to our models that offer internal build-in HDD storage. Because large numbers of MP3/WAV files can be stored on HDDs, the files must be managed in our database in order to achieve comfortable, efficient and smooth operation. DENON DJ Music Manager is a file management program exclusively designed for DENON DJ products.

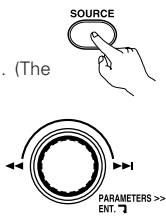

### ■ Preparations for playback

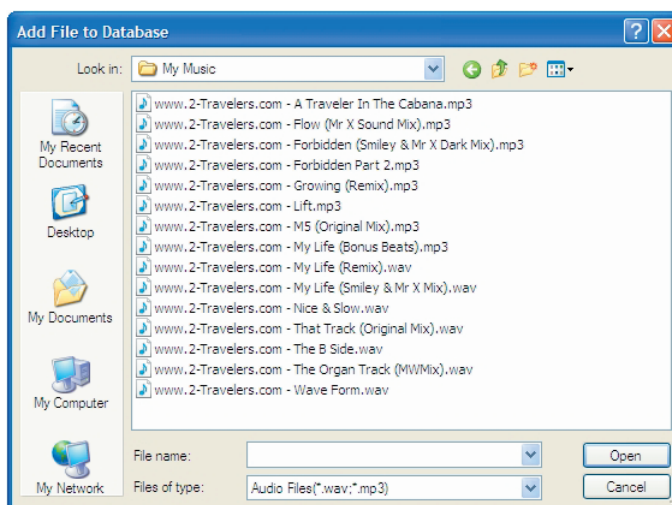
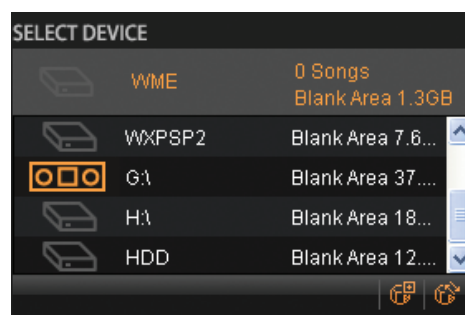
There are two ways of playing MP3/WAV files on the DENON DJ Products, as described below.

- Transferring the MP3/WAV files from a computer onto the player's internal HDD and playing them. (models with built-in HDDs only)
- Connecting a USB HDD or USB memory device on which MP3/WAV files are stored to the player and playing them.

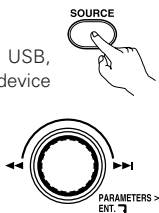
Below is the procedure for playing files using these two methods.

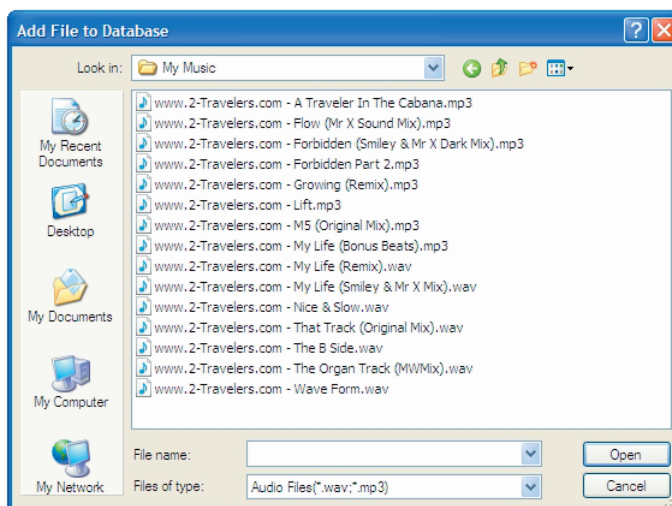
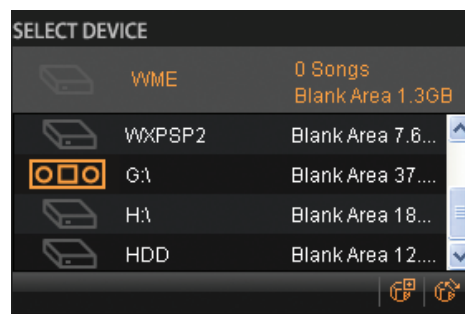
#### 1. Transferring the MP3/WAV files from a computer onto the player's internal HDD and playing them (models with built-in HDDs only)

1	Stop playback on all of the player's decks.
2	Turn on the power of the computer on which DENON DJ Music Manager is installed.
3	Once the computer's power is on, connect its USB terminal to the player's USB B terminal using a USB cable (sold separately).
4	<p>Press the player's SOURCE button to select "PC". (The player is set to the device mode.)</p> <p>* For DENON DJ models with a built-in HDD only.</p> 
5	Double-click on the computer's "DENON DJ Music Manager" icon to launch DENON DJ Music Manager.
6	<p>Select player in the DENON DJ Music Manager's device selection section.</p> 
7	Click the "File (F)" menu, select "Add File to Database" or "Add Folder to Database", then select the file(s) or folder(s) you want to transfer to the player. (Refer to "Adding files to the database" on page 7.)
8	Once file transfer is completed and all the operations are finished, use the computer's "Safety Remove Hardware" to cut the connection to the player.
9	Disconnect the USB cable connected between the player and computer.
10	<p>Turn off the player's power, then turn it back on.</p> <p>* The files that have been transferred to the player can now be played.</p>



## 2. Connecting a USB device to the player and playing its MP3/WAV files

<b>1</b>	Turn on the power of the computer on which DENON DJ Music Manager is installed.
<b>2</b>	Once the computer's power is on, connect the USB HDD or USB memory device on which the MP3/WAV files are stored to the player's USB terminal. * USB Device must be formatted, FAT16 or FAT32 in order to work with the DENON media player. NTFS and HFS formats are not supported by the player's side.
<b>3</b>	Double-click on the computer's "DENON DJ Music Manager" icon to launch DENON DJ Music Manager.
<b>4</b>	Select the USB device connected in step 2 above in the DENON DJ Music Manager's device selection section.
<b>5</b>	When the USB device connected in step 2 above is being used on the player for the first time, a database is created. When creating the database, it is also possible to register all the MP3/WAV files stored on the USB device in the database. (Refer to "Creation and updating of databases" on page 5, 6.) If the USB device connected in step 2 above has been used on the player before, there is no need to create a database. Proceed to step 6.
<b>6</b>	If you want to add MP3/WAV files to the USB device connected in step 2, click the "File (F)" menu, select "Add File to Database" or "Add Folder to Database", then select the file(s) or folder(s) you want to add to the USB device. (Refer to "Editing of file data" on page 7.) * If MP3/WAV files are added to the USB device using Explorer, etc., without using DENON DJ Music Manager, please update the database. (Refer to "Creation and updating of databases" on page 5, 6.)
<b>7</b>	Once all the operations for creating the database, adding files, etc., are completed, use the computer's "Safety Remove Hardware" to terminate the connection with the USB device.
<b>8</b>	Connect the USB device to the player's USB A terminal. (The "LINK" icon flashes in the display.)
<b>9</b>	Depending on your model, press the player's, USB, SOURCE or DEVICE button to select the USB device connected in step 8. * The MP3/WAV files on the USB device can now be played. 

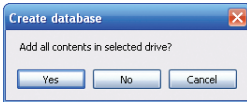


## Creation and updating of databases

### Database Create



Creates a database on the device selected at "SELECT DEVICE".



Select "Yes":

When creating the database, all the MP3/WAV files on the device are registered in the database.

Select "No":

When creating the database, the MP3/WAV files are not registered. They should be registered at the user's discretion. For instructions on registering MP3/WAV files in the database, see "Adding files to the database" on page 7.

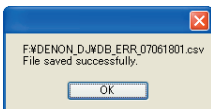
A list of files that could not be registered when the "Database Create" command was executed is displayed.



Close the window to complete the Database Create procedure.



A popup for confirming where the file is to be saved and the file name appears.



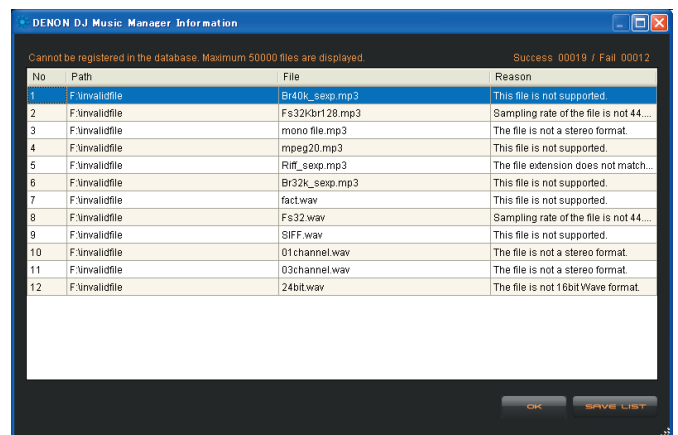
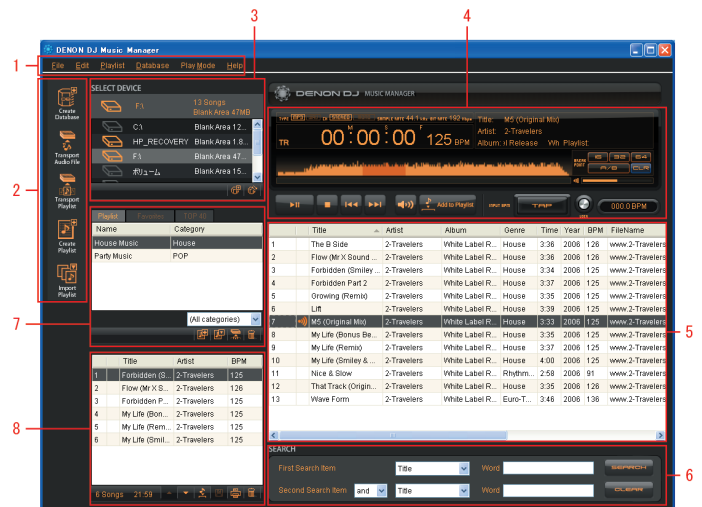
When "OK" is selected, the data is stored in "csv" format in the specified folder.

#### NOTE:

- About formats, etc. (the following applies to USB memory devices and all other sorts of mass storage devices)
  - ① The player is compatible with FAT16 and FAT32 formats.
  - ② Maximum number of files: 50,000/device.\*1
  - ③ Maximum number of folders: 5,000/device.
  - ④ Folder structure: Up to 9 layers.\*2
  - ⑤ For drives formatted in multiple partitions, the player only recognizes the top volume (partition), so when using such drives, move the files you want to play to the top volume.
  - ⑥ Because a database is created, use a device with at least 20 MB of free space.

\*1 If the number of files exceeds 50,000, player can play first 50,000 registered files, and no further files are recognized.

\*2 Cannot playback files in a folder located further from the specified Folder/directory hierarchical level.



## Database Update

If you decide to add more files to an external USB device by your computer's "copy/paste" or "drag&drop" function after a database has already been created, you will need to use the Music Manager's UPDATE function to register these newly added files.

Click .

Updates a database on the device selected at "SELECT DEVICE".



Display of devices that have databases



Display of devices that do not have databases

The contents of the database are compared to those of the current device, files that have been added are registered, and files that have been deleted are removed.

### NOTE:

- When files have been sent to the HDD without using DENON DJ Music Manager, the sent files cannot be used until the database is updated. When only the contents of the ID3 tags have been changed without using DENON DJ Music Manager, the new contents are not reflected in the database, even if the database is updated.
- When a database is updated, entire HDD contents will be checked. Therefore, it can take more time to update a database than to create a new database depending on the HDD contents. To transfer MP3/WAV files into the player built-in HDD (built-in models only) or USB HDD, use DENON DJ Music Manager.
- There is a limit to the number of items that can be stored in the "Title", "Artist", "Album", "Genre" and "Folder" database.  
Title: 50,000  
Artist: 20,000  
Album: 10,000  
Genre: 500  
Folder: 5,000  
Files per Folder: 1,000

## Playback function

The files registered in the database can be played.

### Playing files

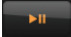
Double-click on the file you want to play to start playback.  
Files registered in playlists can be played by double-clicking on them.

### Stopping playback

Click .

\* When in the stop mode, playback can be resumed by clicking .

### Stopping playback temporarily

Click .

\* When in the pause mode, playback can be resumed by clicking .

### Moving to the next/previous file


Click .

Playback of the next/previous file begins.

### Adjusting the volume

Click .

The more to the right you click, the higher the volume.

Click  to mute the sound.

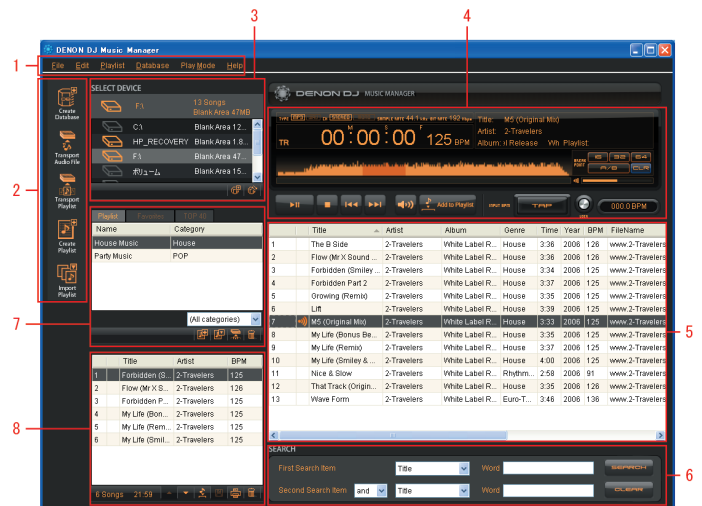
### Calculating the BPM and saving

Click  repeatedly in rhythm.

The file's BPM is calculated.

Click .

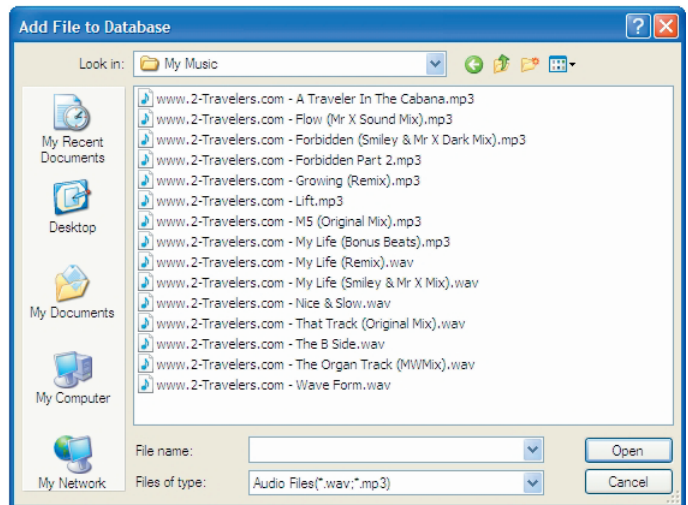
The calculated BPM is stored in the file data (ID3 tag).



## Editing of file data

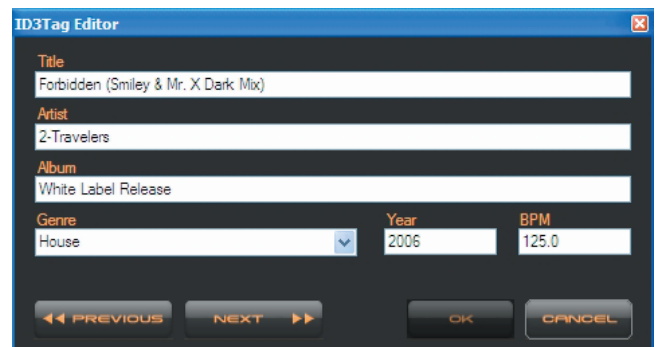
### ■ Adding files to the database

<b>1</b>	Click "File (F)" on the menu or "right-click" in the database file area with your mouse.
<b>2</b>	Select "Add File to Database (A)". A dialog box for selecting the file appears.
<b>3</b>	Select the file you want to add. The selected file is registered in the database and added to the list. * Files can be added in units of folders by selecting "Add Folder to Database (A)" in step 2.



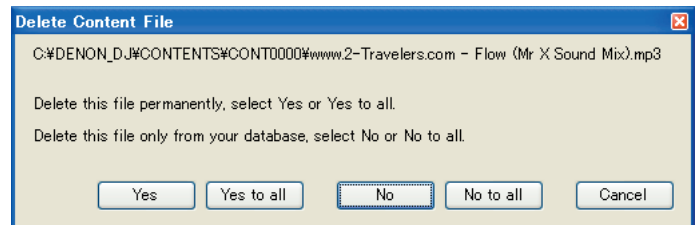
### ■ Changing the contents of the file data (ID3 tag)

<b>1</b>	Click "File (F)" on the menu or highlight file and "right-click" with mouse.
<b>2</b>	Select "Edit ID3 Tag (E)". The ID3 tag editor is displayed.
<b>3</b>	Input the data in the data input section.
<b>4</b>	Click "OK". • The contents input in step 3 are stored and the editor is quit. If "Previous" or "Next" is clicked, contents input in step 3 are stored and the file data (ID3 tag) for the previous or next file is displayed.



### ■ Removing files from the database

<b>1</b>	Click "Edit (E)" on the menu or "right-click" in the database file area with your mouse.
<b>2</b>	Select "Delete (D)". A pop-up window is displayed.
<b>3</b>	The selected file is removed from the database. • Delete the MP3/WAV file permanently, select "Yes" or "Yes to all". • Delete the MP3/WAV file only from your database, select "No" or "No to all".



## Searching for files

This procedure can be used to search for (narrow down) files in the database.

SEARCH

First Search Item

Title

Word

SEARCH



Second Search Item

and

Title

Word



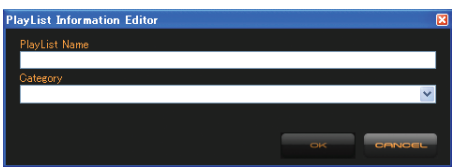
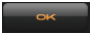
CLEAR

- Input the search criterion at "First Search Item".  
Files can be searched by title, "Artist", "Album", "Genre", "Time", "Year", "BPM" or "FileName".
- Click  or push the ENTER button on your keyboard.  
The search results are displayed.
- To start a new search item, click the  or push the ESC button on your keyboard.


\* It is possible to search with multiple search criteria by inputting another search criterion at "Second Search Item" in step 1.  
"and" .....Only files meeting both criteria are displayed.  
"or" .....Only files meeting one of the search criteria are displayed.

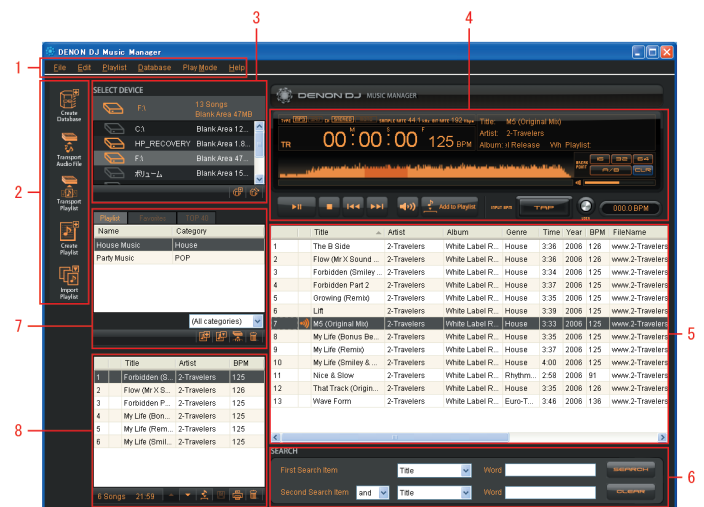
## Creation and updating of playlists

### Playlist Create

- Click  or  or "right-click" your mouse in the Playlist name/category area.  
The "Playlist Information Editor" pop-up window appears.
- Input the name of the playlist and category.  
  
\* Playlists can be created even without category names.
- Click .  
Creation of the playlist is completed.

### Playlist Delete

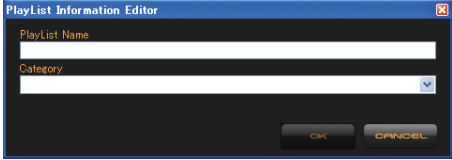
- Select the playlist you want to delete.
- Click .  
The file is deleted from the list.  
\* You may also "right-click" on the Playlist with your mouse and select "Delete".

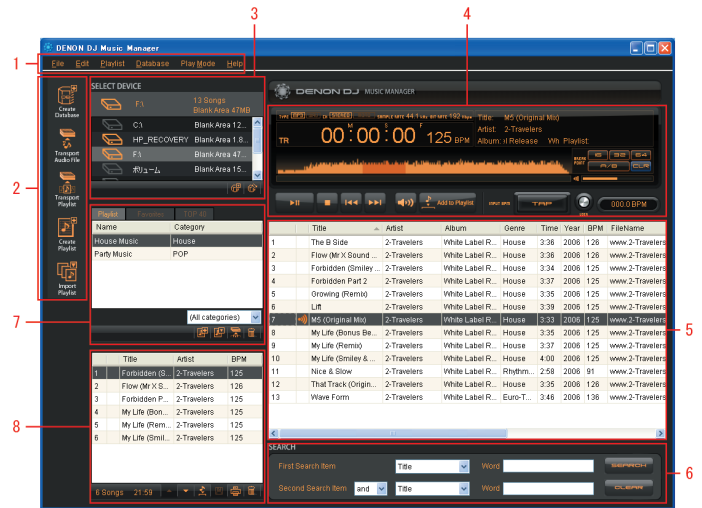






## ■ Playlist Edit

### ● Changing the names of playlists and categories



- 1 Click "Playlist (P)" on the menu or "right-click" your mouse on the Playlist.
- 2 Select "Edit Info (E)".  
The "Playlist Information Editor" pop-up window appears.
- 3 Input the data in the input section.  

- 4 Click "OK".  
\* The contents input in step 3 are stored and the editor will close.  
If "Previous" or "Next" is clicked, contents input in step 3 are stored and the information for the previous or next playlist is displayed.  
Push the CANCEL button to cancel this operation.



### ● Adding files to playlists

- 1 Check the file you want to add.  
Double-click on the file to play it.
- 2 Select  or "drag&drop" the file with your mouse into the Playlist file area.  
The file is added to the currently selected playlist.
- 3 Click .  
Store the playlist.

### ● Deleting files from playlists

- 1 Select the file you want to delete.
- 2 Click .  
The file is deleted from the list.  
\* You may also "right-click" on the Playlist with your mouse and select "Delete".
- 3 Click .  
Store the playlist.


### ● Printing playlists

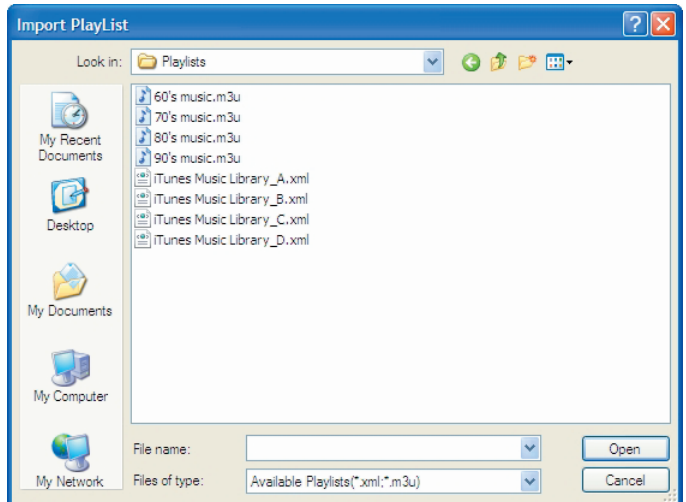
- 1 Click .  
Print the current playlist.

## Playlist Import

Playlists created on different applications (in XML/M3U format) can be imported.

\* If files in formats other than MP3/WAV are included on an imported playlist, those files are registered in our playlist.

1	<p>Click .</p> <p>A dialog box for selecting the playlist is displayed.</p> <p>* You may also select multiple Playlists at once for faster importing.</p>
2	<p>Select the playlist to be imported.</p> <p>The selected playlist is registered in Database and added to the playlist display area.</p>



## Backup

The device with the specified database is backed up.

\* A folder name and file name of backed up file are saved with Short File Name. Also the names of restored file are restructured with Short File Name. Therefore please use the back up operation as a preliminary function.

1	Click "File (F)" on the menu.
2	Select "Backup (B)".

## Restore

The device with the specified database is restored.

1	Click "File (F)" on the menu.
2	Select "Restore (R)".

## Automatic detection of the BPM

The DENON DJ Music Manager offers a very accurate BPM engine to analyze and save a BPM value directly to your registered mp3/wav files.

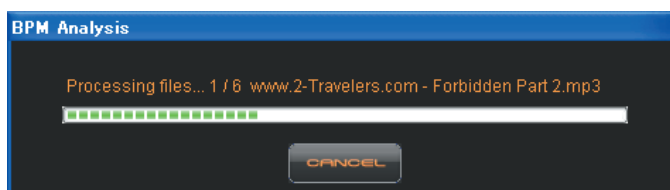
Therefore for accurate performance, it is highly recommended to "Auto BPM" all your registered files (on USB devices) for various BPM functions that are synchronized on the DENON DJ players.

<b>1</b>	Select the files whose BPM values you want to detect.
<b>2</b>	Select "File" in the menu section.
<b>3</b>	Select "AutoBPM". Analysis of the selected file to detect its BPM begins.
<b>4</b>	A list of the BPM values detected through file analysis is displayed. The detected BPM values are stored in the files' ID3 tag.

### NOTE:

- Files with BPM's less than "60" cannot be analyzed.
- Files that are registered which already have a BPM less than "60" will not be displayed by the Music Manager's BPM field. The BPM field will appear "blank" for these files.

	Title	Artist	Album	Genre	Time	Year	BPM	FileName
1	The B Side	2-Travelers	White Label R...	House	3:36	2006		www.2-Travelers.com - The B Side.mp3
2	Forbidden (Smiley ...	2-Travelers	White Label R...	House	3:34	2006		www.2-Travelers.com - Forbidden (Smiley & Mr X Dark M...
3	Forbidden Part 2	2-Travelers	White Label R...	House	3:37	2006		www.2-Travelers.com - Forbidden Part 2.mp3
4	Growing (Remix)	2-Travelers	White Label R...	House	3:35	2006		www.2-Travelers.com - Growing (Remix).mp3
5	Lift	2-Travelers	White Label R...	House	3:39	2006		www.2-Travelers.com - Lift.mp3
6	M5 (Original Mix)	2-Travelers	White Label R...	House	3:33	2006		www.2-Travelers.com - M5 (Original Mix).mp3
7	My Life (Bonus Be...	2-Travelers	White Label R...	House	3:35	2006		www.2-Travelers.com - My Life (Bonus Beats).mp3
8	My Life (Remix)	2-Travelers	White Label R...	House	3:37	2006		www.2-Travelers.com - My Life (Remix).mp3
9	My Life (Smiley & ...	2-Travelers	White Label R...	House	4:00	2006		www.2-Travelers.com - My Life (Smiley & Mr X Mix).mp3
10	Nice & Slow	2-Travelers	White Label R...	Rhythm...	2:59	2006		www.2-Travelers.com - Nice & Slow.mp3
11	That Track (Origin...	2-Travelers	White Label R...	House	3:35	2006		www.2-Travelers.com - That Track (Original Mix).mp3
12	Wave Form	2-Travelers	White Label R...	Euro-T...	3:46	2006		www.2-Travelers.com - Wave Form.mp3



	Title	Artist	Album	Genre	Time	Year	BPM	FileName
1	The B Side	2-Travelers	White Label R...	House	3:36	2006	126	www.2-Travelers.com - The B Side.mp3
2	Forbidden (Smiley ...	2-Travelers	White Label R...	House	3:34	2006		www.2-Travelers.com - Forbidden (Smiley & Mr X Dark M...
3	Forbidden Part 2	2-Travelers	White Label R...	House	3:37	2006	125	www.2-Travelers.com - Forbidden Part 2.mp3
4	Growing (Remix)	2-Travelers	White Label R...	House	3:35	2006		www.2-Travelers.com - Growing (Remix).mp3
5	Lift	2-Travelers	White Label R...	House	3:39	2006	125	www.2-Travelers.com - Lift.mp3
6	M5 (Original Mix)	2-Travelers	White Label R...	House	3:33	2006	125	www.2-Travelers.com - M5 (Original Mix).mp3
7	My Life (Bonus Be...	2-Travelers	White Label R...	House	3:35	2006	125	www.2-Travelers.com - My Life (Bonus Beats).mp3
8	My Life (Remix)	2-Travelers	White Label R...	House	3:37	2006		www.2-Travelers.com - My Life (Remix).mp3
9	My Life (Smiley & ...	2-Travelers	White Label R...	House	4:00	2006		www.2-Travelers.com - My Life (Smiley & Mr X Mix).mp3
10	Nice & Slow	2-Travelers	White Label R...	Rhythm...	2:59	2006		www.2-Travelers.com - Nice & Slow.mp3
11	That Track (Origin...	2-Travelers	White Label R...	House	3:35	2006		www.2-Travelers.com - That Track (Original Mix).mp3
12	Wave Form	2-Travelers	White Label R...	Euro-T...	3:46	2006	133	www.2-Travelers.com - Wave Form.mp3

## Waveform data generation function

### ■ This function records waveform data for MP3 files

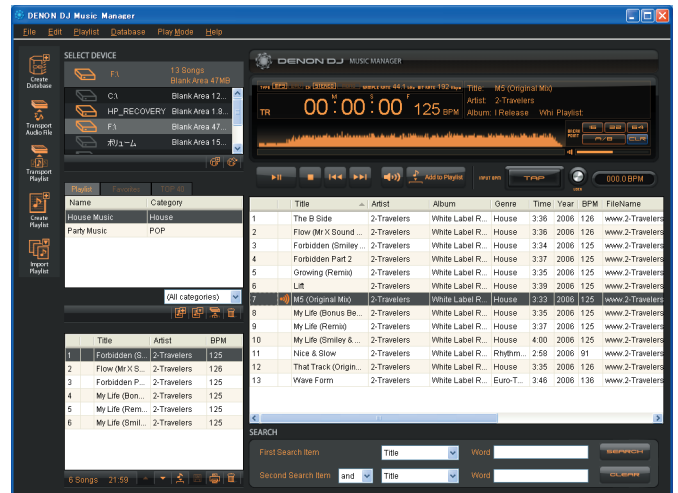
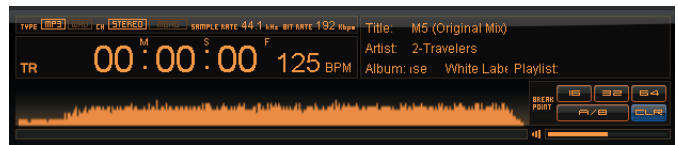
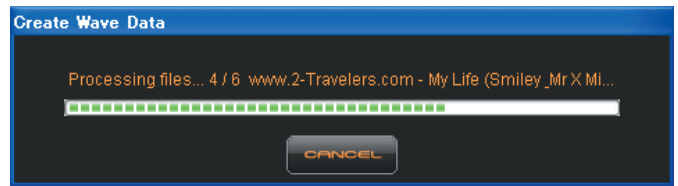
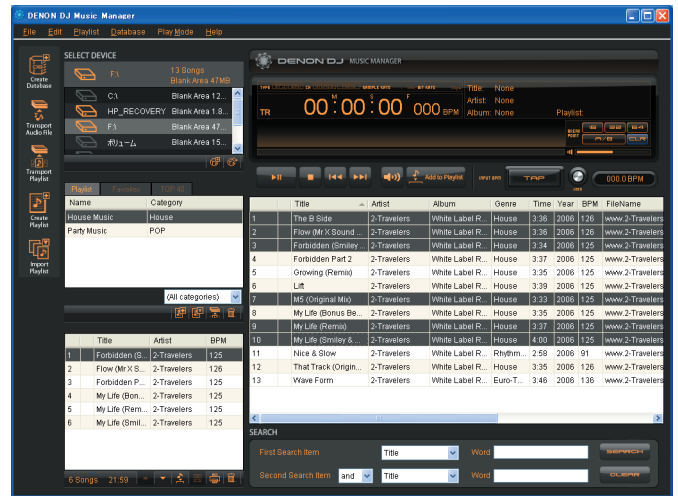
The “Waveform” function is a representation of the audio signal pattern that indicates various energy peaks within the music file, which can also be viewed on the display of selected DENON DJ players.

\* Note, models produced prior to 2009 will not offer this function.

1	Select the file for which you want to create the waveform data.
2	Select the “File (F)” menu or “right-click” on the selected file.
3	Select “Create Wave Data”. Creation of the waveform data for the selected file begins.
4	The created waveform data is recorded in the file’s ID3 tag and displayed in the [Playback section] when the file is played.

#### NOTE:

- When the “Create Wave Data” menu item is selected to create the waveform data, the waveform data is not created if there is already waveform data in the file’s ID3 tag.
- When the “Recreate Wave Data” menu item is selected to create the waveform data, new waveform data is created even if there is already waveform data in the file’s ID3 tag.
- If no BPM value is recorded in the ID3 tag when creating waveform data, the “Automatic detection of the BPM” records the BPM value in the ID3 tag at the same time.
- If you decide to add waveform data to all your files in one session, this may take a while depending on how many files you have. It is recommended to perform this task at least 24-hrs before needing to access this device.



## Break point setting function

### ■ This function stores break points in MP3 files

<b>1</b>	Play the file for which you want to set the break point.
<b>2</b>	At the place you want to set the break point, click the 16, 32, 64 or A/B button. A break point of the corresponding number of beats (16, 32 or 64 beats) is set at the point at which the button was clicked, and the break point is stored in the MP3 file's ID3 tag. For the A/B button, first set the break point's starting point, then the break point's end point.
<b>3</b>	When the break point is set, the break point position is indicated in dark orange in the waveform display area.
<b>4</b>	To clear a break point you have set, press the CLR button.
<b>5</b>	The break point area can be viewed in the display of the supported media player by red dots.

#### NOTE:

Record the waveform data in the MP3 file using the "Waveform data generation function" on page 12 before setting a break point for that file.

